



66 Manchester Road Auburn NSW

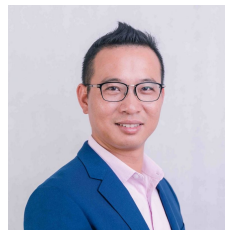
3 1 2

This refreshed, solid brick home, set on a 335sqm block, offers spacious living with investment potential. Just 450m from Mona Park and around 1km from key local amenities such as St Joseph's Hospital, restaurants, shops, and schools, this property is ideal for a large family.

Type : House
Price : Auction On Site 16th Nov 24 at 11:30AM
Land Size : 335 sqm
View : <https://www.hspartners.com.au/8156449>

Key Features:

- ** Spacious 3 bedrooms, 2 with built-ins wardrobe
- ** Modern kitchen with gas stove and integrated oven
- ** Large, separate living and dining areas
- ** Tiled stylish bathroom with separate toilet
- ** Freshly painted, solid brick construction
- ** Timber flooring throughout and air conditioning
- ** Covered carport for secure parking
- ** Close proximity to restaurants, shops, and other



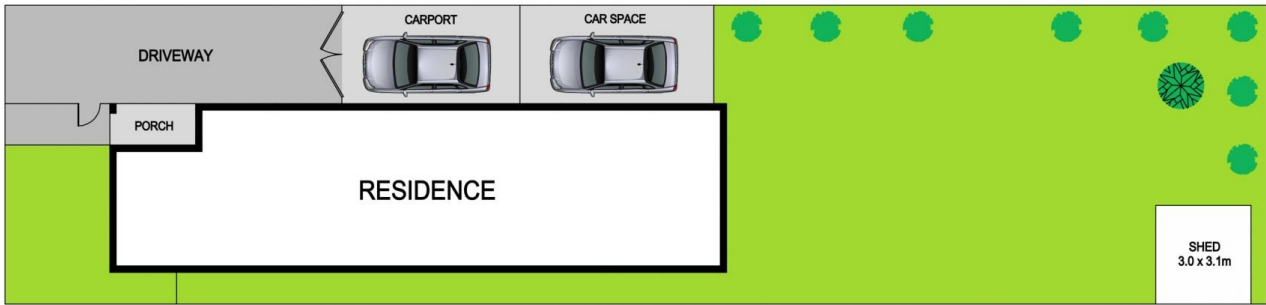
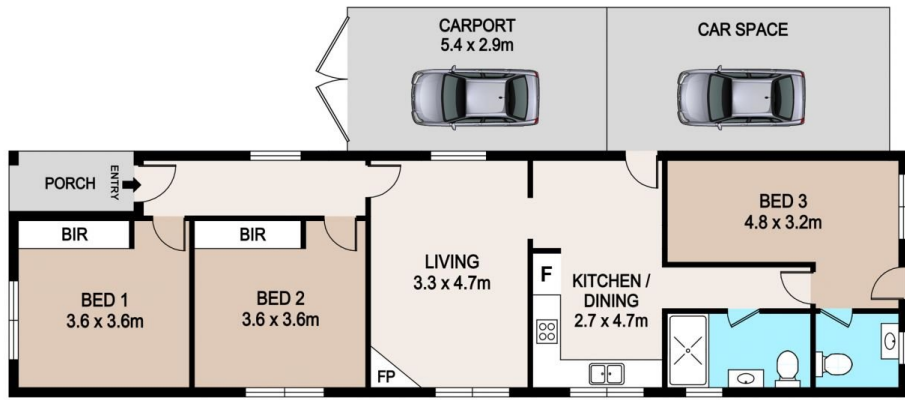
Andy Haisheng Shi
02 9643 5888



Angela Qiuling Zhang
02 9643 5888

[For full version visit the website](https://www.hspartners.com.au)

<https://www.hspartners.com.au>



66 Manchester Rd, Auburn

Disclaimer:
The information provided on this floor plan is shown for presentation purposes only and are not part of any legal document or title. They are subject to errors, omissions, inaccuracies and should not be used as a sole and accurate reference. Interested parties should make their own inquiries using independent sources.

