

15/73 Woodpark Road Woodpark NSW

4 🛏 2 🚗 2 🚗

****FRIENDLY REMINDER**** Best access at the Cul De Sac at the end of Pambula Crescent as well as a security gate on exit at Woodpark Road.

Land Size : 251 sqm

View : <https://www.hspartners.com.au/8040067>

This superbly spacious four-bedroom townhouse offers impeccable home-like proportions and low maintenance living, featuring an oversized floor plan of 251 sqm with low strata levies. Situated in a small boutique development of just 16 residences, it provides an effortless indoor/outdoor flow to an entertainer's courtyard with a pergola.



Andy Haisheng Shi
02 9643 5888

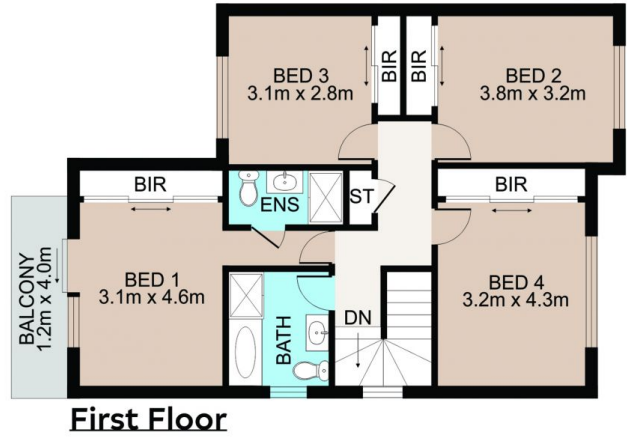
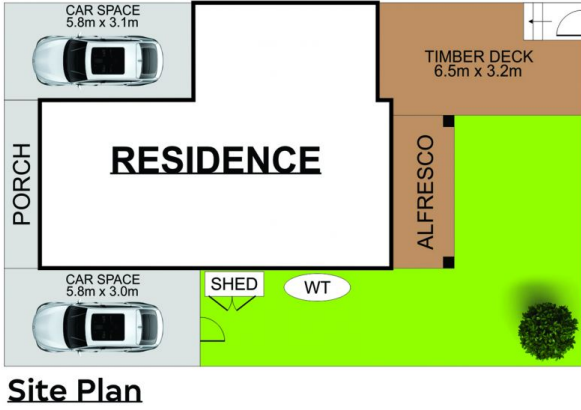
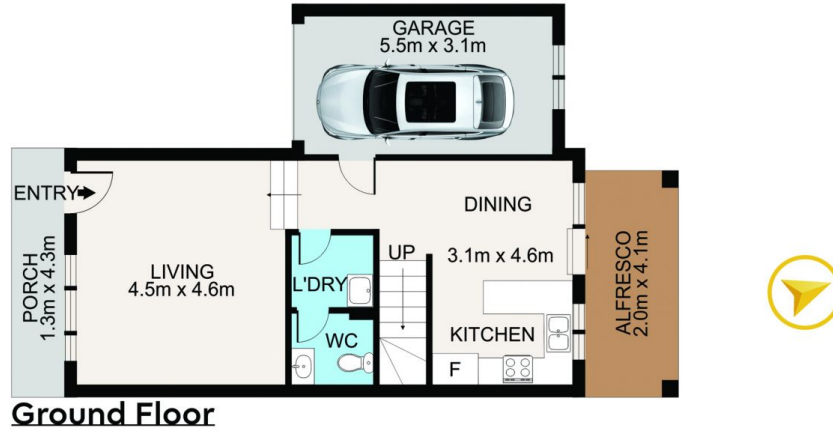


Angela Qiuling Zhang
02 9643 5888

Conveniently located in a popular pocket of Woodpark, this property is within moments of schools, shops, transport, and offers easy access to arterial roads, ensuring a comfortable and connected lifestyle.

Main Features:

<https://www.hspartners.com.au>



15/73 Woodpark Road, Woodpark



Scale in metres. Indicative only. Dimensions are approximate. All information contained herein is gathered from sources we believe to be reliable. However we cannot guarantee its accuracy and interested persons should rely on their own enquiries